

# Iteration Strategies

---

Current Parameters:

Which initial route-set?

⇒ Shortest Path, Fastest Path, Void, Random

What re-planning fraction?

⇒ constant, decreasing

What subset of routes is to be re-planned?

⇒ random, linear age, fixed fraction

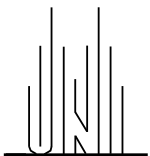
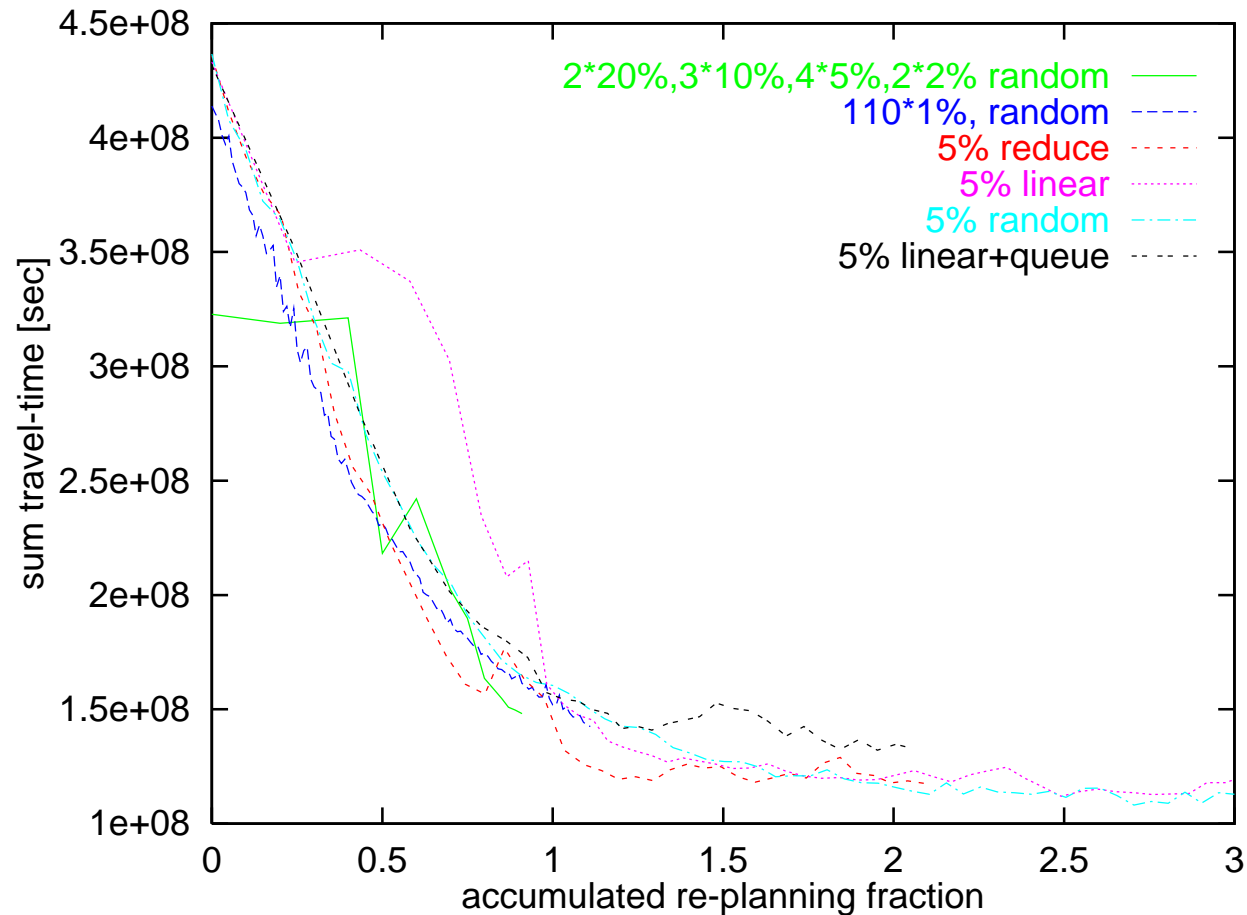
How many iterations?

⇒ 20...110



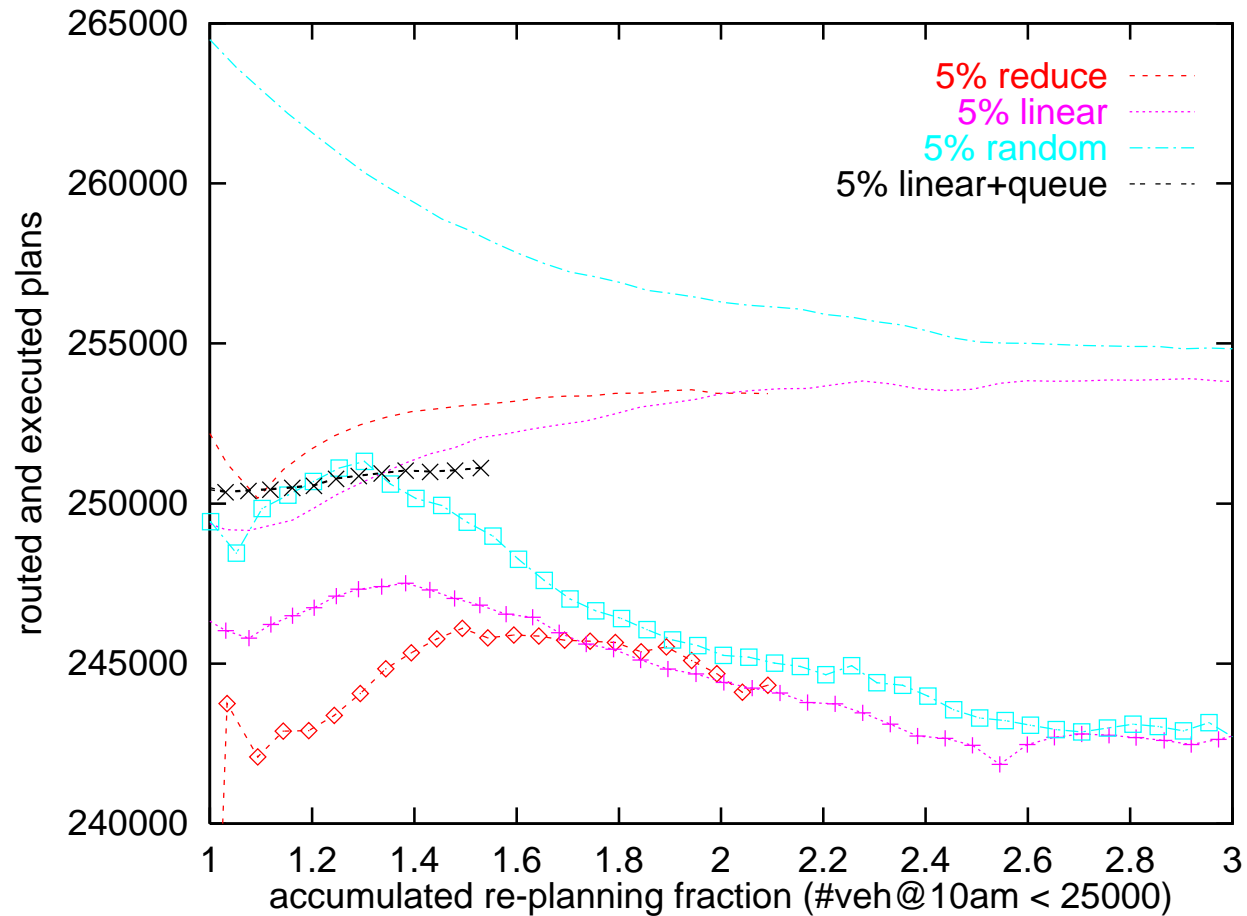
# Iteration Strategies

Sum Travel-Time as Convergence Criterion



# Iteration Strategies

Routed and Executed Routes in Study-Area



# Iteration Strategies

Comparison between TRANSIMS and PAMINA

